

Covid-19

School Investigation for classroom and activities

with no documented transmission in classroom or activity

Isolate



COVID POSITIVE

Self-Monitor

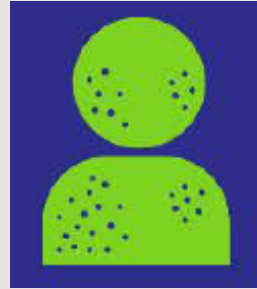


EXPOSED

Everyone Masked

When a masked child tests positive and those exposed are wearing mask

Isolate



COVID POSITIVE

Quarantine



EXPOSED

Exposed Masked

When a unmasked child tests positive and those exposed are wearing mask

Isolate **Self-Monitor** ↓ **Quarantine**



COVID POSITIVE

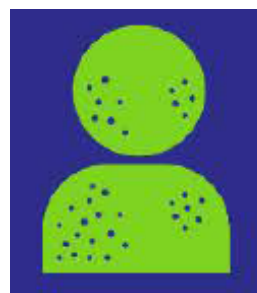


EXPOSED

Exposed Unmasked

When a masked child tests positive and not all exposed are wearing mask

Isolate



COVID POSITIVE

Quarantine



EXPOSED

No One Masked

When a unmasked child tests positive and those exposed are not wearing mask