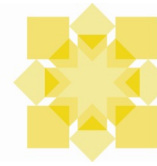


# South Heartland Annual Report 2008-2009

SOUTH  
HEARTLAND  
DISTRICT



**HEALTH  
DEPARTMENT**

## Board of Health Approves Building Purchase Department to Move in November 2009



### South Heartland's Vision:

Healthy People  
in  
Healthy Communities

### Inside this Report:

Welcome from the Board President and Executive Director	2
Public Health Improvement Plan	3
Public Health Surveillance and Disease Investigation	4
Responding to Emergencies	5
Healthy Lifestyles and Making Healthy Choices	6
Linking People to Services	8
Partnering for Public Health	9
Enforcing Laws; Training Public Health Workforce	10
Annual Financial Report	11
Board of Health Members & Staff Directory	12

South Heartland District Health Department will be moving into a new home in late 2009.

In May 2009, the Board of Health approved moving forward on the purchase of a building and property at 606 N. Minnesota in Hastings. The more than 5,000 square foot space will be renovated to meet the health department's growing needs, including staff offices, a training & conference room to house the Department's videoconferencing equipment and frequent accommodation of community and partner non-profit meetings, private meeting areas for TeleHealth medical or mental health appointments, more storage, areas to house expanded health education and resource library, along with a new clinic area with space for future health screenings, immunizations and other services.

This action by the Board comes after more than a

year of study and preparation -- beginning with Board strategic planning, analysis of current space, feasibility and sustainability studies, and searching by staff and Board members for potential properties to lease or purchase.

Formed in 2001 as part of the public health infrastructure funding designated by LB 692 (Nebraska Tobacco Master Settlement Funds), South Heartland began with a single employee - Former Executive Director Joyce Crawford - who, along with the Board, conducted a community needs assessment and developed the skeleton health department with a prime directive of filling in gaps, not duplicating existing services.

Eight years later, the Department has expanded to 10 regular staff positions, and manages a budget of over \$1M. Un-supported by any local tax dollars, South Heartland's work is backed in part by LB 692 and LB 1060 funds and in part by federal,



state and local grants and contracts. The Department partners with a multitude of community organizations, government agencies, educational institutions, medical and dental professionals, and others to advance public health in Adams, Clay, Nuckolls and Webster counties.

South Heartland's activities include health and wellness education and programming, investigation of communicable diseases, assessment and surveillance of community health indicators, public health emergency planning and response, enforcement of public health laws and regulations and promoting coverage and access to medical, dental, vision, and behavioral health care services.

### South Heartland's Mission

The South Heartland District Health Department is a combined health district dedicated to preserving and improving the health of the residents of various municipalities and townships within Adams, Clay, Nuckolls, and Webster Counties. Our mission is to provide those services mandated by statutes of the State of Nebraska in a courteous, efficient and effective manner within the limits of sound economic responsibility. Through interaction with other community agencies and leaders, the Board and staff will determine which public health services are needed and how that need may be met and financed. The Board will conduct continuing review of these activities to judge their effectiveness and continued need.

Public Health  
Core Functions

ASSESSMENT

POLICY  
DEVELOPMENT

ASSURANCE

Essential Public  
Health Services:

- (1) **Monitor Health Status and Understand Health Issues Facing the Community**
- (2) **Protect People from Health Problems and Health Hazards**
- (3) **Give People Information They Need to Make Healthy Choices**
- (4) **Engage the Community to Identify and Solve Health Problems**
- (5) **Develop Public Health Policies and Plans**
- (6) **Enforce Public Health Laws and Regulations**
- (7) **Help People Receive Health Services**
- (8) **Maintain a Competent Public Health Workforce**
- (9) **Evaluate and Improve Programs and Interventions**
- (10) **Contribute to and Apply the Evidence Base of Public Health**

## Welcome *from the* Board President



This is my first year as Board President and I am proud to be a part of the growing success of South Heartland District Health Department.

One of the many activities the Health Department has been involved in this past year has been the development of a new public health improvement plan to guide us in the next 5 years. As South Heartland District Health Department strives to improve the health of the citizens of our four counties, each one of us can take responsibility to do our part to create healthier environments in which we live - including our communities, work places, homes and our bodies. I challenge everyone to look at our public health improvement plan and find a section of one of the six goals to personally work on.

Public Health starts with individuals. Please do your part in making "healthy people in healthy communities."

*Peggy Meyer, LIMHP, Board President*

## FY 2009 At a Glance *from the* Executive Director



This year has brought changes, advances and some important focused activities for local public health. Our staff monitored and helped to control a pertussis (whooping cough) outbreak, engaged 5 area schools and 3 employers in wellness planning to help fight obesity, partnered with Central District Health Department and local stakeholders in a 7-county area to help improve access to care by beginning to plan for a community health center, worked with businesses and law enforcement to educate on and plan for implementation of the Nebraska Clean Indoor Air Act, and in coordination with state and federal health officials initiated and maintained a local response to the novel H1N1 influenza virus outbreak. I am proud that SHDHD organized a team of six including three local professionals from across the District, that was accepted with scholarship to the Management Academy of Public Health at the University of North Carolina. The team will be creating a business plan to address access to mental health care in our district. And finally, I am excited to announce that our Department will be moving to our own permanent facility in the fall of 2009. As always, much of what we accomplish is dependent upon our strong partnerships with other local organizations—and we are grateful for their collaboration with us to improve public health. Please read on to learn more about these partnerships and SHDHD's accomplishments this past year.

*Michele Bever, PhD*

## New Board Members



Eric Samuelson  
Clay County  
Board of Supervisors



Merrill Duntz  
Clay County  
Representative



Ron Kuehner  
Webster County  
Representative



Leota Rolls  
Adams County  
Representative

# A New Public Health Improvement Plan

From assessments to goals & strategies for public health improvement.

South Heartland rolled out a new 5-year public health improvement plan based on the results of two major assessments completed in the previous year. A team consisting of four Board Members, two staff members and 2 community members reviewed the public health needs identified by the assessments and developed six new public health goals:

To promote healthy living through physical activity, nutrition and safety;

To inform area about mental health and wellness and to facilitate access to appropriate services;

To prevent and control oral disease, conditions, and injuries and improve access to related services;

To reduce illness, disability and death caused by lung, breast, prostate and colon cancer;

To reduce the illness, disability and death related to substance abuse;

To reduce the health impact of environmental hazards.

Action plans for each of these goals outline activities for (1) data collection and monitoring the health issue, (2) education and prevention, (3) mobilizing partnerships to tackle the issue while seeking resources to support the collaborative efforts, and (4) utilizing best practices and developing innovative approaches in order to be both effective and good stewards of our resources.



## Local Team Accepted to UNC Management Academy for Public Health Will Develop Plan Addressing Access to Mental Health Services

A team of 6 local professionals was the first team from Nebraska to be accepted to the esteemed University of North Carolina Management Academy for Public Health to learn how to develop a business plan for a local public health project. The SHDHD plan will look at expanding access to mental

health services in the South Heartland Health District. The team members are SHDHD Director Michele Bever, PhD; Assistant Director & Grants Manager Cindi McDowell, CFRE; SHDHD Board of Health President Peggy Meyer, LMHP; Region 3 Behavioral Health Ser-

vices Network Specialist Melinda Farritor, LMHP; Webster County Community Clinic Family Physician Amy Springer, MD; and Brodstone Memorial Hospital CFO Sandy Borden. The team's 9-month training will be completed in April 2010.

## Sun Safety Policy Adopted at Local Pool

As part of a sun safety and skin cancer awareness effort supported by a DHHS Pool Cool grant to South Heartland, Health Educator Desiree Rinne researched model sun safety policies then provided a policy to Hastings Aquacourt Water Park. After the policy was adopted, Rinne provided training on the policy and on sun safety to more than 60 Aquacourt staff. Signage with sunscreen tips, provided by the grant, was posted around the pool.



Essential Service

## Develop Public Health Policies and Plans

In a show of support for the importance of fluoridation in providing optimal dental health for everyone, the SHDHD Board of Health passed a **Resolution on Community Water Fluoridation.**



Good dental health starts early in life.



# Public Health Surveillance and Disease Investigation

Essential Service

Monitor Health Status and Understand Health Issues Facing the Community

## Monitoring Oral Health

SHDHD conducted screenings for oral disease in 179 children from 5 preschools and day cares.



We asked parents to report whether their child had a regular dentist and whether they had dental coverage.

We learned that 32% of the children had yet to see a dentist for the first time, 18% had no insurance at all, 10% had health insurance but no dental coverage and 6% were underinsured for dental care.

## South Heartland Tracks and Investigates Reportable Diseases

Health Surveillance Coordinator Anita Sullivan monitors reportable diseases using the NEDSS system (National Electronic Disease Surveillance System) and direct reports from providers. During FY2008-2009, SHDHD processed more than 150 disease reports, including reports of hepatitis B, hepatitis C, tuberculosis, campylobacteriosis, salmonellosis, West Nile fever, aseptic meningitis, tularemia, E. coli, rocky mountain spotted fever, strep pneumonia, Lyme disease, pertussis, giardiasis, legionellosis, MRSA bacteremia, Group A streptococcus, mycobacterium, and staph TSS.

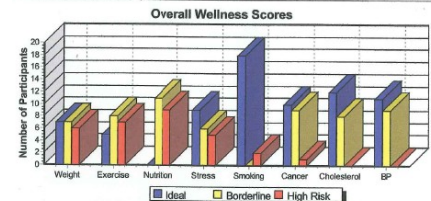
Once a report is received, the information is logged in and the patient's health care provider is contacted to obtain clinical

symptoms and history, such as vaccinations. The patient may be interviewed for further information about the illness, including exposure sources. SHDHD staff may conduct an investigation to determine whether additional persons were exposed to the patient while s/he was infectious. Potential contacts are informed that they may have been exposed and given information on what they can do to prevent the disease from developing. Finally, the information obtained through interviews and follow up is entered into the NEDSS system, completing the circle of information exchange between local partners, the state health department, the CDC, and the population we serve.

## Assessing Employee and Student Health for Wellness Programs in Businesses and Schools

South Heartland uses LB1060 funds to subscribe to the TRALE Health Risk Assessments (HRAs) in English and in Spanish. We maintain links to these on the Department website for the public to access at their convenience to take their own confidential health risk survey.

This year Community Health Education Coordinator Sandi Stevens used the TRALE HRAs to gather aggregate information on student and staff health indicators for schools that are participating in SHDHD's *Alliance for Healthy Children in Healthy Schools* intervention grant. School wellness teams used this aggregate data to develop priority goals for



their school wellness action plans.

A separate health risk assessment and blood screening activity is being conducted by Mary Lanning Memorial Hospital with each of the businesses participating in South Heartland's *Wellness for Women at Work* MCH grant to provide individual feedback to employees and aggregate results for employers as they develop workplace wellness action plans.

## Monitoring for West Nile Virus in our Communities

SHDHD continues seasonal monitoring for West Nile virus (WNV), including dead bird collection for WNV testing and mosquito trapping from 6 sites in Webster County to test for the presence of the virus in the mosquito population.

Beginning in June 2009, SHDHD began a partnership with the City of Hastings Mosquito Control staff to add mosquito surveillance to Adams County. The city staff collects mosquitoes from 7 sites in the Hastings area for submission to

DHHS for WNV testing.

Positive tests in both mosquitoes and birds revealed the ongoing presence of WNV in the South Heartland Health District and the need for continued efforts to educate the public on how to protect themselves against the disease.

Also new this year, we added annual summaries of bird and human West Nile Virus data to the SHDHD website so that the public may easily access to this local information.



The *Culex tarsalis* mosquito is the most common carrier of West Nile Virus in Nebraska.

# Emergency Preparedness & Response

Essential Service

Protect People  
from  
Health Problems  
and  
Health Hazards

## Local Response to Pandemic H1N1 Influenza Outbreak

On April 26, 2009, SHDHD activated the emergency response plan and local emergency coordination center (LECC) in response to the H1N1 influenza outbreak in the United States and Nebraska.

SHDHD's early H1N1 influenza outbreak response included activation of the risk communication plan: notifying stakeholders and providing guidance, recommendations and/or education (hospitals, clinics, labs, schools, emergency managers, businesses, daycares, elected officials, pandemic planning committees, other partners, and the public through various media and a web

-based notification system. Staff prepared H1N1 packets with resources and information for distribution to area businesses through a Hastings Area Chamber of Commerce email blast that included: 1 page Advisory, Business preparedness checklist, Swine Flu and You CDC brochure, Swine Flu Facts in English and Spanish. The marketing/risk communication effort also included publication of a full page ad on H1N1 for the print media, writing scripts for PSA's on H1N1 virus (3 spots), and magnets with information on where to go for public health information mailed to every household in the health district.

With the H1N1 outbreak, county-level pandemic planning committees were reactivated to review plans and receive updates on recent events. Additional planning included a focus on communication with vulnerable populations / special populations (older adults, non-English speakers, daycare providers, schools, churches, etc.) as well as health care providers, emergency responders, government officials and others. Notification lists were rapidly updated and reconfigured as needed.



## Surveillance Ramped up for H1N1 Outbreak

The 2009 H1N1 Influenza Outbreak provided an opportunity to evaluate South Heartland's ability to run expanded surveillance activities for an extended period of time. These surveillance activities included more frequent monitoring of school absences due to illness, hospital inpatient influenza-like illness (ILI) inpatient, outpatient ILI, laboratory testing, plus periodic surveillance for other data collection, such as the local retail and hospital pharmacy inventory of antiviral medications and the typical number of seasonal influenza vaccinations administered by various

providers in the district. All three hospitals within the health district participate with SHDHD to track influenza-like illness (ILI) admissions, staff illness/shortages due to ILI, and bed capacity each week throughout the influenza season. The reports by our partners at Brodstone Memorial Hospital, Webster County Community Hospital, and Mary Lanning Memorial Hospital allow us to monitor the local course and severity of the influenza season – which ended up extending through the summer with the H1N1 outbreak. This information was valuable for developing & refining pandemic response plans.

## Emergency Exercises Provide Practice for Real Events

SHDHD helped to develop and participated in emergency planning and exercises throughout the year focused on disaster behavioral health, pandemic flu, alternate care sites, school violence, interoperable communications, school surveillance for a pan-

demic, risk communication, mass fatalities, and the Strategic National Stockpile. Planning partners included emergency management, schools, behavioral health, hospitals, Office of Minority Health, law enforcement, Midland Area Agency on Aging, Tri-Cities Medical Response System, and many others.

**SOUTH HEARTLAND DISTRICT HEALTH DEPARTMENT**

Your Source for Local  
**PUBLIC HEALTH INFORMATION**  
*Adams, Clay, Nuckolls and Webster Counties*

**www.southheartlandhealth.org**  
**1-877-238-7595**

FIND IT HERE: DISEASE INFORMATION, HEALTHY LIFESTYLES, HOT TOPICS, PANDEMIC FLU, UPCOMING PROGRAMS, LOCAL HEALTH STATISTICS, EMERGENCY PREPAREDNESS and MORE!

Public Health **Emergency Information** will also be aired by these local stations:  
**KHAS-TV 5    KOLN KGIN 10/11    KRYW 890**  
**KHAS-AM 1230    KRFS-FM 103.9/AM 1600**

SHDHD mailed 6,500 magnets to area households to communicate where to find important public health information.

Public Health Risk Coordinator Jim Morgan and emergency response coordinators from 2 other local health departments gave presentations on H1N1 response to a state meeting of Certified Medical Assistants. Approximately forty CMAs volunteered to assist at vaccination clinics following the presentations.



# Healthy Lifestyles.....

## Essential Service

Give People Information They Need to Make Healthy Choices

### Inform, Educate and Empower!

SHDHD staff visited all 4 counties to share health information with attendees at 13 health fairs or booth events and provided education on SHDHD Public Health Improvement Plan topics such as: Flu Vaccinations, Oral Health, Walking Programs, MRSA, West Nile Virus, Lead Poisoning Prevention, Stress, Nebraska Clean Indoor Air, Tobacco Cessation, Act, Hand Washing/Hand Hygiene, and Cancer Awareness & Screening.



### 540 Fourth Graders Attend South Heartland's 4th Annual Kids Fitness and Nutrition Day at Hastings College

Five hundred and forty 4th grade students from 20 area schools came to Hastings College in September 2008 to participate in a day focused on physical fitness and nutrition activities. Our partners (Hastings College, Hastings YMCA, and UNL Extension-Adams County) helped coordinate and provided most of the 110 volunteers for the event activities. At the physical activity stations the students tried out the Fitness Stability Balls, Dead Bug Freeze Tag, Parachute, and many more. At the Nutrition Sta-

tions, students learned about Label Logic, Hand Washing & Food Safety, Energy Balance, Healthy Snacks, and MyPyramid. In reviewing the day's activities, one teacher said: "I probably don't say thanks enough for how much work goes into planning and implementation. It was a fantastic day!!"

New in 2008: we used a pre-test/post-test to evaluate student's knowledge about nutrition and physical activity before and after the event.



A Hastings College student volunteer prepares this group of 4th graders for the next physical activity.

### "Stop Germs that Hurt, Please Use a Squirt"

SHDHD initiated a hand hygiene education campaign, including distribution of hand sanitizers with a message from the Health Department: "Stop Germs that Hurt, Please use a Squirt." Public Health Risk Coordinator Jim Morgan visited

banks, restaurants, quick shops, government offices and other public places in all 4 counties to deliver the pump hand sanitizers along with a message about the importance of practicing hand hygiene.



### Preparing for the Clean Indoor Air Act

On June 1, 2009 the Nebraska Clean Indoor Air Act of 2008 went into effect, requiring indoor workplaces in Nebraska to be smoke-free. South Heartland partnered with Mary Lanning Business Health and the Hastings Area Chamber of Commerce Wellforce Committee to provide education to area



businesses. The education campaign included public service announcements and ads, presentations, and door-to-door delivery of information packets to 50 area bars and other businesses.

### Scrubby Bear Shows Children How to Wash their Hands

Scrubby Bear gave 32 presentations to nearly 700 elementary and pre-school children about the importance of washing hands and how to stop the spread of germs. Scrubby also made appear-

ances at *Creative Kids Day* at the Imperial Mall and *Dios De Los Ninos - Book Day* at the Hastings City Auditorium where 700 more children had the opportunity to meet him and learn about hand washing.



Children meet Scrubby Bear at *Dios De Los Ninos* in Hastings

# ..... And Making Healthy Choices

## Inform, Educate and Empower!

South Heartland's Health Educators and other staff reach audiences large and small, old and young; they receive repeat and new requests for presentations and in-services from a wide variety of organizations. In FY 2009, over 1250 people attended 56 audience-specific presentations cov-

ering topics such as hand washing, cough etiquette, diabetes, how to meet health goals, My Pyramid, oral health, infection control, nutrition for older adults, lead poisoning, sun safety, skin care, asthma, pandemic flu, H1N1 influenza (with lots of interest in infection control and

hand washing), radon, pertussis, STDs, and food- and water- borne illnesses.



**Goal:**  
**Inform, Educate & Empower People About Health Issues to Reduce Risk and Promote Improved Health**

## Concinando para Mejor Salud, "Cooking for Better Health"

A pilot program, *Concinando para Mejor Salud* ("Cooking for Better Health") gave Latina participants an opportunity to learn more about healthy cooking in lessons and practical hands-on experience. Fourteen women com-

pleted the classes and received Certificates of Completion from the Nutrition Education Program (UNL Extension Adams County). Participants contributed recipes for a cookbook of nutritious traditional and cultural-

based foods. This project was organized by SHDHD, with instruction by UNL Extension Educator Deb Unterseher, kitchen space provided by the Hastings YWCA, and funding from the Office of Minority Health.



## Giant Mosquitoes for West Nile Virus Education

South Heartland purchased giant models of the stages of the mosquito life cycle as part of their new education plan for West Nile Virus. The set includes oversized but anatomically accurate representations of egg raft, larva, pupa and adult male and female stages of the

mosquito species *Culex tarsalis*. SHDHD will use the mosquito models for an activity at the biennial Water Jamboree organized by the Little Blue NRD for more 800 5th and 6th grade students in south central Nebraska.



## Promoting Community Water Fluoridation & Good Oral Health

Board of Health member Dr. Dave Landgren helped South Heartland staff teach visitors to Kool-Aid Days about the importance of good oral health. Children who blasted the tooth cavities with fluoride (bean bag toss) won prizes like dental floss (grape-flavored to match the Goofy for Grape festival theme).

The Adams County Dental Association provided a display on dental caries and a puppet to demonstrate tooth brushing. SHDHD health educators developed a display with fun tooth facts and information on the benefits of community water fluoridation.



Director Michele Bever helps a young visitor practice brushing teeth on a friendly monkey puppet at Kool-Aid Days.



Dr. Dave Landgren explains how The Cavity Blaster game works at Kool-Aid Days in Hastings, August 2008.





# Working Together to Improve Public Health

## ...By Planning for a Community Health Center

In partnership with Central District Health Department, SHDHD recruited steering committee members for the South Central Nebraska (7 county) Community Health Center Planning project funded by a planning grant awarded to the Iowa/Nebraska Primary Care Association.

In addition to 3 SHDHD staff and members representing Central District, the steering committee has representation from many key stakeholders in the South Heartland jurisdiction including Mary Lanning Memorial Hospital/Mary Lanning Community Clinic, Brodstone

Memorial Hospital, Webster County Community Hospital, Head Start, Hastings Family Planning, Midland Area Agency on Aging, Lockwood and Meeske Pediatric Dentistry, Clay County Health Department and Crossroads Mission.

The committee completed the assessments and collected data, visited other community health centers in Iowa and Nebraska and has reached consensus to move forward on a grant application for a Federally Qualified Health Center (FQHC).

Committee members have expressed how gratifying it is

to see this initiative progressing after many years of discussion about the need for a FQHC and numerous failed efforts in the past. Some recall initiatives going back fifteen or more years! Others have noted how pleasing it is to find leaders and citizens from the seven county area working so well together – especially given the history among the Grand Island and Hastings communities of not always working collaboratively. It does seem the time is finally right to see this long held dream come to fruition for the citizens of South Central Nebraska.

Essential Service

Engage the Community to Identify and Solve Health Problems

## ...By Forming Alliances to Advance School Wellness

South Heartland is partnering with 5 public schools, one each in Webster, Nuckolls, and Clay Counties and 2 in Adams County for South Heartland's **Community Alliance for Healthy Children in Healthy Schools** project. The project promotes the development of active school wellness councils with members representing school staff, administra-

tion, and students, and also health care providers, parents, and community members. Project coordinator Sandi Stevens assists the school wellness councils in assessing the health of their students and staff as well as the "health" of their school (curriculum, environment, policies, etc.). Wellness councils review the data and develop a school wellness action plan to ad-

dress their priority goals. SHDHD provides evidence-based resources for implementation of the wellness action plans.



Walk to School Activity at Lincoln School

## ...With Ideas on How to Make Our Drinking Water Safer

SHDHD Executive Director Michele Bever was asked to provide facilitation expertise and to partner with Hastings Utilities, Little Blue/Big Blue NRDs, and The Groundwater Foundation in providing technical assistance to a workgroup addressing the increasing nitrates in the Hastings

Wellhead Protection Area. This group is advising Hastings Utilities on ways to reduce groundwater contamination by nitrates in the greater Hastings area. In a series of 3 meetings from February to April, the workgroup identified 4 areas of focus (public education, best management

practices, nitrate source inventory, and water use/conservation) and developed specific proposals for each area. These proposals were presented to the Hastings Board of Works in July 2009 and are serving as the basis for grant proposals to support the proposed interventions.

## Mini-Grants

South Heartland uses LB692 funds to **support community efforts** to identify and solve health problems. This year, SHDHD awarded a total of **\$10,840** in mini grants to four organizations for health-related projects or programs that support the SHDHD Public Health Improvement Plan:

- **Youth Power Program**-Hastings YWCA
- **Update DVD Resources** - Hope Pregnancy Resource Center, Superior
- **Vision Screening**-Region 9 Preschool Interagency Council Brain Team
- **Blood Glucose Screening & Education**-Wellforce Committee, Hastings Area Chamber of Commerce



## Protecting Public Health by Enforcing Laws

Essential Service

Enforce Public Health Laws & Regulations

### SHDHD to Enforce NCIAA and Meth Clean Up Regulations

SHDHD staff met with Law Enforcement and County Attorneys to inform them of SHDHD's role in Nebraska Clean Indoor Air Act (NCIAA) enforcement and to agree on procedures for response to complaints. In the first month after the law went into effect on June 1, 2009, SHDHD worked with two establishments in response to complaints filed indicating possible NCIAA violations.



The rules and regulations regarding methamphetamine lab clean up were under review this year and DHHS provided a protocol to follow until the process was completed. SHDHD received one report on a clandestine meth lab bust that could have required assurance on clean up. Staff worked with local law enforcement and determined that no clean up was required in this instance. The process helped us to solidify partnerships and procedures that will be needed to assure meth lab clean up in the future.

## Training & Expertise in Public Health

Essential Service

Maintain a Competent Public Health Workforce

### South Heartland Holds Quarterly Training on Infection Control

SHDHD coordinates quarterly meetings of the South Heartland Infection Control Group. RNs, LPNs, APRNs, CMAs, and other health care providers working in school, clinic, long term care, hospital, and public health settings are invited to attend our educational programs on a variety of public health topics. Invited experts provided the following training:

- July, 2008 - "**Food and Water Borne Illness**" presented by Dennis Leschinsky, Communicable Disease Surveillance Specialist with NE DHHS (21 attendees)
- October, 2008 - "**Management of a Community-Wide Pertussis Outbreak**" presented by Anita Sullivan, RN, Health Surveillance Coordinator for SHDHD, Ken Zoucha, MD, Local

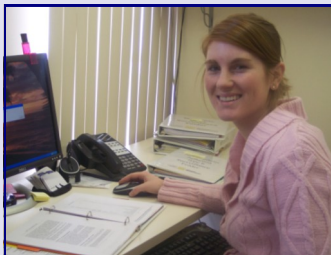
pediatric health care provider, and Tom Safranek, MD, State Epidemiologist for NE DHHS. (53 attendees - 38 live and 15 by telehealth)

- January, 2009 - "**The Role of the Laboratory in Infection Control**" presented by Chris Page, MT, (ASCP) Director of Laboratory Services for Mary Lanning Memorial Hospital. (19 attendees - 16 live and 3 by telehealth)
- April, 2009 - "**Update on Meningitis**" plus "**Situation Update: Swine Flu (Pandemic 2009, H1N1)**" presented by Daniel Brailita, MD, Central Nebraska Infectious Disease Program. (49 attendees - 31 live and 18 by telehealth)

### Public Health Internships at South Heartland

South Heartland partners with Hastings College to provide internship opportunities for college students who may be interested in pursuing a career in public health. Terri Studley, a Hastings College Health Promotion major, developed and administered a pre-post test evaluation tool for the 4<sup>th</sup> Annual Kids Fitness and Nutrition Day and served as a key planning assistant for the event. Amy Hartline developed a Community Resource Guide that lists names and descriptions of the many human services and support services

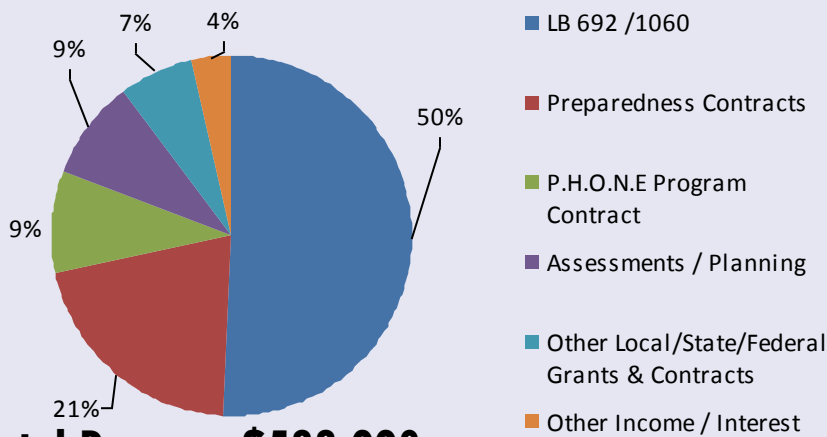
in our four county district with contact information for each service. The resource guide was posted on the SHDHD website for public access. In her Spring 2009 internship with South Heartland, Hastings College pre-nursing student Amy Kroll assisted SHDHD surveillance staff by developing resources (templates for Health Alerts, fact sheets) and putting together reference binders by disease, including Haemophilus influenza B, MRSA, rabies, STDs, and the emerging disease Denge Fever.



Hastings College student Amy Kroll works on a project in Disease Investigation for her internship

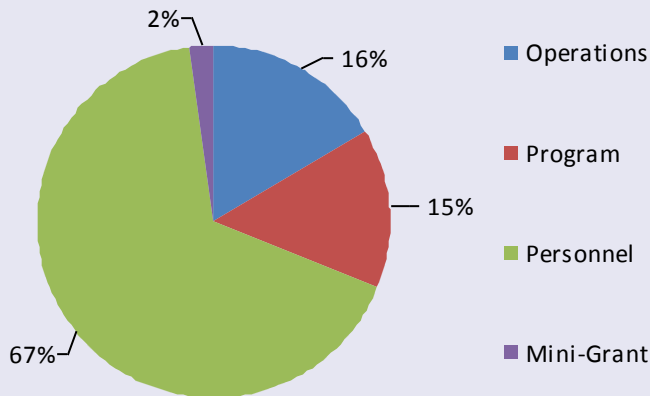
# Annual Financial Report 2008-2009

## Revenue by Source



**Total Revenue \$588,003**

## Expenditure by Category



**Total Expenditures \$511,345**

Public Health  
Core Functions

ASSESSMENT

POLICY  
DEVELOPMENT

ASSURANCE

A BIG "Thank You!" to former SHDHD staff members who served the Department during portions of FY2009:

- Jessica Warner, Health Educator
- Lyndsey Fabel, Health Educator
- Rosa Guia, Minority Health Education Coordinator
- Melissa Pedroza, Minority Health Educator

### TRI-Cities Medical Response System (TRIMRS)

<b>Revenue</b> SHDHD FY 2008-2009	<b>\$300,878</b>
TRIMRS Contract with DHHS	\$274,944
Partnership Grant	\$20,934
NACCHO Grant	\$5,000
<b>Expenses</b> SHDHD FY 2008-2009	<b>\$389,100</b>



Denise Ferguson's dog Abby plays "Therapy Dog" at the Family Assistance Center Full Scale Exercise in Adams County

**NEW ADDRESS:** 606 N. Minnesota, Suite 2  
Hastings, Nebraska 68901

Phone: 402-462-6211 / 1-877-238-7595  
For Public Health Emergencies: 402-469-2543  
Fax: 402-462-6219  
E-mail: [shdhd@windstream.net](mailto:shdhd@windstream.net)

*Protecting and Improving Health  
in Adams, Clay, Nuckolls and Webster Counties*

We are on the web at  
[www.southheartlandhealth.org](http://www.southheartlandhealth.org)

## Board of Directors

### County Officials

Charles Neumann	Adams County Supervisor
Eric Samuelson	Clay County Supervisor
Michael Combs	Nuckolls County Commissioner
Mary Delka	Webster County Commissioner

### Public Spirited Citizens

Judy Reimer	Adams County
Leota Rolls	Adams County
Merrill Duntz	Clay County
Bob Rose	Clay County
Peggy Meyer	Nuckolls County
Perry Freeman	Nuckolls County
Barbara Sprague	Webster County
Ron Keuhner	Webster County

### Professional Representatives

Michele Durr, MD  
Keri Wulf, DVM  
David Landgren, DDS

### Officers (Elected January 2009)

President	Peggy Meyer, LIMHP
Vice President	Charles Neumann, DVM
Treasurer	Barbara Sprague

### Board Members who completed terms or retired during the 2008-2009 Fiscal Year:

Jan Baird, Clay County  
Gene Arnold, Clay County Supervisor  
W. Michael Kearney, Adams County  
Robert Sheckler, Webster County

*We thank you for your years of service!*

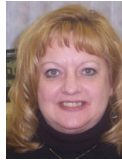


**Public Health**  
Prevent. Promote. Protect.

## Staff Directory



**Michele Bever, PhD**  
**Executive Director**  
[michele.bever@southheartlandhealth.org](mailto:michele.bever@southheartlandhealth.org)  
Phone: 402-462-6211



**Cindi McDowell, CFRE**  
**Assistant Director & Grants Administrator**  
[cindi.mcdowell@southheartlandhealth.org](mailto:cindi.mcdowell@southheartlandhealth.org)  
Phone: 402-462-6211



**Denise Ferguson**  
**Administrative Assistant & Financial Coordinator**  
[denise.ferguson@southheartlandhealth.org](mailto:denise.ferguson@southheartlandhealth.org)  
Phone: 402-462-6211



**Janet Staehr, RN**  
**Public Health Outreach Nursing Education (P.H.O.N.E.)**  
[janet.staehr@southheartlandhealth.org](mailto:janet.staehr@southheartlandhealth.org)  
Phone: 402-462-6244



**Anita Sullivan, RN**  
**Health Surveillance Coordinator**  
[anita.sullivan@southheartlandhealth.org](mailto:anita.sullivan@southheartlandhealth.org)  
Phone: 402-462-6211



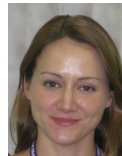
**Jim Morgan**  
**Public Health Risk Coordinator**  
[j.morgan@southheartlandhealth.org](mailto:j.morgan@southheartlandhealth.org)  
Phone: 402-462-6211



**Sandi Stevens, RN, MS**  
**Community Health Education Coordinator**  
[sandi.stevens@southheartlandhealth.org](mailto:sandi.stevens@southheartlandhealth.org)  
Phone: 402-462-6211



**Desiree Rinne, BS**  
**Health Promotion  
Public Health Educator**  
[desiree.rinne@southheartlandhealth.org](mailto:desiree.rinne@southheartlandhealth.org)  
Phone: 402-462-6211



**MaLinda Moore**  
**Reception/Clerk**  
[shdhd@windstream.net](mailto:shdhd@windstream.net)  
Phone: 402-462-6211



**Janice Bank (Experience Works Participant)**  
**Reception**  
Phone: 402-462-6211  
[shdhd@windstream.net](mailto:shdhd@windstream.net)